

# Türk Patoloji Dergisi

Official Journal of the Federation of Turkish Pathology Societies

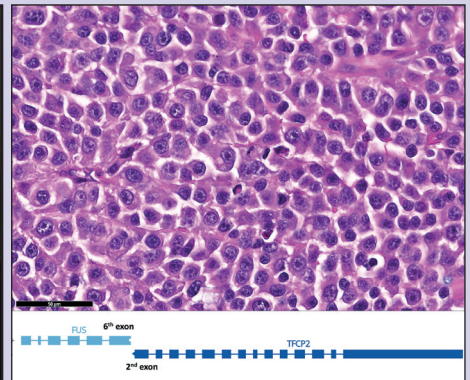


## TURKISH JOURNAL OF PATHOLOGY

SEPTEMBER 2021

VOLUME 37

NUMBER 3



The Role of Immunocytochemical Markers to Differentiate Primary from Secondary Neoplastic Hepatic Masses: A Diagnostic Challenge on Cytology

Metastases to the Stomach: Clinicopathologic Features of Metastases Mimicking Gastric Primaries

What's in a Name?  
Michael N. Marsh, BTh,  
DPhil, DM, DSc, FRCP

Does the Distance of the Tumor from the Surgical Margin Affect Biochemical Recurrence in Patients with Pathological Organ-Confined Prostate Cancer?

Cholemic Nephrosis: An Autopsy Study of a Forgotten Entity

Peripheral Lymphadenopathy in Children: Cytomorphological Spectrum and Interesting Diagnoses

What Would Next Generation Sequencing Bring to the Diagnosis and Treatment of Sarcomas? A Series of 20 Cases, a Single Institution's Experience

Prognostic and Predictive Significance of PD-L1 Expression in Non-Small Cell Lung Cancer Patients: A Single-Center Experience

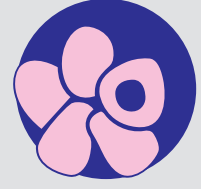
Primary Myeloid Sarcoma of Ovary: A Case Report and Review of the Literature



# Turkish Journal of Pathology

Official Journal of the Federation of Turkish Pathology Societies

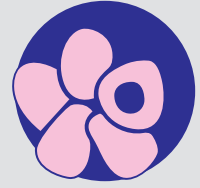
Published three issues per year



<b>Editor-in-Chief</b>	Volkan ADSAY	Koç University	(editor@turkjpath.org)
<b>Senior Associate Editors</b>	Kutsal YÖRÜKOĞLU Alp USUBÜTÜN Ümit ÇOBANOĞLU Fazilet KAYASELÇUK	Dokuz Eylül University Hacettepe University Karadeniz Technical University Başkent University	(kutsal.yorukoglu@deu.edu.tr) (ausubutu@hacettepe.edu.tr) (drumitcoban@yahoo.com) (faziletks@yahoo.com)
<b>Deputy Executive Editors</b>	Pelin BAĞCI Burçin PEHLİVANOĞLU	Marmara University Başakşehir Çam & Sakura City Hospital	(pelinbagci@gmail.com-editorialoffice@turkjpath.org) (burcinp@yahoo.com-editorialoffice@turkjpath.org)
<b>Associate Editors</b>	Övgü AYDIN Sergülen DERVİŞOĞLU Başak DOĞANAVŞARGİL Aydın İŞİSAĞ Mehmet KEFELİ Tolgay ÖCAL Önder ÖNGÜRÜ Erdener ÖZER Özgül SAĞOL Sülen SARIOĞLU Banu SİS Merva SOLUK TEKKEŞİN Aykut ÜREN Ali VERAL Osman ZEKİOĞLU	Istanbul University Medipol University Ege University Celal Bayar University Ondokuz Mayıs University Mayo Clinic Anadolu Medical Center Dokuz Eylül University Dokuz Eylül University Dokuz Eylül University University of Alberta Istanbul University Georgetown University Ege University Ege University	(ovguaydin@gmail.com) (sergulen.dervisoglu@gmail.com) (bdoganavsargil@yahoo.com) (aydinisisag@superonline.com) (mehmetkefeli@gmail.com) (tolgay@cox.net) (onguruo@yahoo.com) (erdener.oz@deu.edu.tr) (ozgul.sagol@deu.edu.tr) (sulen.sarioglu@deu.edu.tr) (bsis@ualberta.ca) (merva.soluktekkesin@gmail.com) (au26@georgetown.edu) (veral.ali@gmail.com) (osman.zekioglu@gmail.com)
<b>International Editorial Board</b>	Sylvia L. ASA Jacques Patrick BARBET Nesimi BÜYÜKBABANI Eduardo CALONJE Fatima CARNEIRO Christopher P. CRUM Beyhan DEMİRHAN Ahmet DOĞAN Arzu ENSARİ Jonathan I. EPSTEIN Yener S. EROZAN Vincenzo EUSEBI Agnes FOGO Andrew FOLPE Maria Pia FOSCHINI Gökhan GEDİKOĞLU Ömer GÜNHAN Işın KILIÇASLAN Günter KLÖPPEL İşinsu KUZU Daniela MASSI Özgür METE Şükrü Oğuz ÖZDAMAR Anil Vasdev PARWANI Raymond W. REDLINE Miguel REYES-MÜGICA Hemamali SAMARATUNGA Aydin SAV Fernando SCHMITT Hiroyuki SHIMADA Manuel Sobrinho SIMÕES Figen SÖYLEMEZOĞLU Ayşegül Şahin Henry TAZELAAR Tarık TİHAN Toyonori TSUZUKI I Silvia UCCELLA Gordan M. VUJANIC Suzan ZORLUDEMİR Olca BAŞTÜRK	Case Western Reserve University Paris Descartes University Istanbul University St Thomas' Hospital University of Porto Harvard Medical School Başkent University Memorial Sloan Kettering Cancer Center Ankara University Johns Hopkins University Johns Hopkins University University of Bologna Vanderbilt University Mayo Clinic University of Bologna Hacettepe University TOBB University Istanbul University Technical University of Munich Ankara University University of Florence University of Toronto Yüksek İhtisas University Ohio State University Case Western Reserve University The University of Pittsburgh University of Queensland Yeditepe University University of Porto Stanford University University of Porto Hacettepe University MD Anderson Cancer Center Mayo Clinic University of California San Francisco Aichi Medical University University of Insubria Cardiff University Çukurova University Memorial Sloan Kettering Cancer Center	United States France Turkey United Kingdom Portugal United States Turkey United States Turkey United States Italy United States United States Italy Turkey Turkey Turkey Germany Turkey Italy Canada Turkey United States United States United States Australia Turkey Portugal United States Portugal Turkey United States United States United States Japan Italy United Kingdom Turkey United States

# Turkish Journal of Pathology

Official Journal of the Federation of Turkish Pathology Societies



<b>Advisory Board of This Issue</b>	Aytekin AKYOL Semin AYHAN Pelin BAĞCI Yakup Sancar BARIŞ Olca BAŞTÜRK Aslı ÇAKIR Emel DİKİCİOĞLU ÇETİN Yelda DERE	Nuket ÖZKAVRUK ELİYATKIN Nusret ERDOĞAN Armağan GÜNAL Ergun KARAAĞAOĞLU Kemal KÖSEMEHMETOĞLU Sevdegul AYDIN MUNGAN Zehra ORDULU Berrak GÜMÜŞKAYA ÖCAL	Burçin PEHLİVANOĞLU Damlanur SAKIZ Özgen ARSLAN SOLMAZ Havva Serap TORU Burçin TUNA Nesrin TURHAN Banu YAMAN
<b>Senior Consultant in Biostatistics</b>	Ergun KARAAĞAOĞLU	Hacettepe University	Turkey
<b>Consultant in Biostatistics</b>	Jale KARAKAYA	Sevilay KARAHAN	Yağmur ZENGİN
<b>Redaction</b>	Dr. Aydın YULUĞ		

 Turkish Journal of Pathology has been a member of the DOI® system since March 2010.



iThenticate is used by Turkish Journal of Pathology to prevent scientific misconduct and to detect plagiarism.



This journal is a member of, and subscribes to the principles of, the Committee on Publication Ethics (COPE) [www.publicationethics.org](http://www.publicationethics.org)

**Owner on behalf of Federation of the Turkish Pathology Societies**

**Funda YILMAZ BARBET**

Ege Üniversitesi Tıp Fakültesi, Tıbbi Patoloji Anabilim Dalı,  
İzmir, Turkey Tel: +90 (232) 390 4558

**Publishing Manager**

**H. Sıtkı TUZLALI**

Vali Konağı Caddesi, Ferah Sokak, Doğu Sitesi B1 Blok Daire: 5,  
Nişantaşı, İstanbul, Turkey

**Head Office**

Sezai Selek Sokak, Sevim Apt, No: 7/1, Nişantaşı, İstanbul, Turkey

**Editor-in-Chief**

**Volkan ADSAY**

Koç University, Department of Pathology, İstanbul, Turkey

**Publishing House**

BULUŞ Design and Printing

Bahriye Üçok Caddesi No: 9/1, Beşevler, 06500, Ankara, Turkey

Tel: +90 (312) 223 55 44 +90 (312) 222 44 06

Fax: +90 (312) 222 44 07 E-mail: [bulus@bulustasarim.com.tr](mailto:bulus@bulustasarim.com.tr)

**Publication Type**

**Periodical**

Published three issues per year: January, May, September

## AIMS AND SCOPE

The Journal's aims are to publish articles in all fields of surgical pathology including autopsy, cytopathology, digital pathology (including information technologies) and molecular pathology as well as clinicopathological studies.

The Journal is open to all studies using immunohistochemical, ultrastructural techniques and molecular methods in the diagnostic pathology field. Studies that recommend new techniques and methods, electronic education, and quality control and quality assurance-related studies are also within the journal's scope.

Articles published in this journal are evaluated in an independent and unbiased, double blinded peer-reviewed fashion by an advisory committee. Turkish Journal of Pathology mainly publishes original articles (clinical, research and laboratory studies). Occasionally, "invited reviews", "meeting or conference reports", "book reviews", "biographies" and "letter to the editor" (opinions, interpretation and new information on various aspects of pathology) may also be published. Case reports are evaluated for publication only if a new entity, a new or a very rare histopathological and/or molecular characteristic is described.

All articles must be written in English, and should include abstract and key words. Articles must be in accordance with the "International Committee of Medical Journal Editors: Uniform Requirements for Manuscripts Submitted to Biomedical Journals" (<http://www.icmje.org/>). Study protocol for human experimentation must conform to the ethical guidelines established in the "World Medical Association Declaration of Helsinki"

(<http://www.healthscience.net/resources/declaration-of-helsinki/>). Articles reporting the results of experimental studies on animals must be conducted in accordance with "Guide for the Care and Use of Laboratory Animals" (<http://www.nap.edu/catalog/5140.html>).

### Abstracting and Indexing

The Turkish Journal of Pathology is indexed by:

- Web of Science-Emerging Sources Citation Index
- National Library of Medicine-Medline/Pubmed
- HINARI
- Elsevier – SCOPUS
- Index Copernicus
- DOAJ
- EBSCO
- Google Scholar
- Microsoft Academic Search
- WorldCat (OCLC)
- TUBİTAK/ULAKBİM
- Turk Medline
- Turkish Citation Index

### Editor-in-Chief

**Prof. Volkan ADSAY, MD**

Koç University, Department of Pathology  
Istanbul, Turkey

Tel : +90 (532) 258 21 96

E-mail: editor@turkpath.org

### Advertising and Publishing Services

Buluş Design and Printing

Bahriye Üçok Caddesi No: 9/1

Beşevler, 06500, Ankara, Turkey

Tel : +90 (312) 223 55 44; +90 (312) 222 44 06

Fax: +90 (312) 222 44 07

E-mail: can@bulustasarim.com.tr

### Permission Requests

Manuscripts, figures and tables published in the Turkish Journal of Pathology can be reproduced, archived in a retrieval system, by providing proper citations.

If there are advertising purposes for using Federation's intellectual properties please contact the Federation of Turkish Pathology Societies.

### Subscriptions

Tables of contents, abstracts and full texts of all articles published are accessible free of charge through the web site <http://www.turkpath.org> since 2006.

### Material Disclaimer

Scientific and legal responsibilities pertaining to the papers belong to the authors. Contents of the manuscripts and accuracy of references are also at the authors' responsibility. The Federation of Turkish Pathology Societies, Editor-in-Chief, Editors, Editorial and Advisory Board members and the Publisher decline responsibility for errors or any consequences arising from the use of information contained in this journal.

### Open Access Policy

Turkish Journal of Pathology adopts open access policy. Open access to information benefits the humanity as it improves the global value of information. Turkish Journal of Pathology also supports the Budapest Open Access Initiative that was signed on September 12, 2002. Thus, the open access policies adopted by the editorial board of Turkish Journal of Pathology can be found at <http://www.budapestopenaccessinitiative.org/boai-10-recommendations>.

All articles published in Turkish Journal of Pathology are licensed with "Creative Commons Attribution 4.0 International License". This license entitles all parties to copy, share and redistribute all the articles, data sets, figures and supplementary files published in this journal in data mining, search engines, web sites, blogs and other digital platforms under the condition of providing references.

Open access is an approach that eases the interdisciplinary communication and encourages cooperation among different disciplines. Turkish Journal of Pathology, therefore, contributes to its own field by providing more access to its articles and a more transparent review process.

### Contact

Patoloji Dernekleri Federasyonu

Hilal Mah.Cezayir Cad.No:36/2 Çankaya ANKARA

E-mail: editor@turkpath.org editorialoffice@turkpath.org

## INSTRUCTIONS FOR AUTHORS

### SCOPE

Turkish Journal of Pathology (<http://www.turkjpath.org>) (ISSN:1018-5615 / E-ISSN:1309-5730) is the official journal of the Federation of Turkish Pathology Societies and is devoted to the continuing education of national and international practicing pathologists, and to provide a forum for social and scientific communication in the field. The Journal is a peer-reviewed scientific journal published every four months, three times a year (January, May, September), and aims to reach all relevant national and international medical institutions and persons. Articles in English are welcome.

### ARTICLE TYPES

Studies that emphasize these aims provide the basis of publication including original articles, reviews, abstracts from annual meetings, letters to the editor, book reviews, biographies and articles with social content.

Turkish Journal of Pathology accepts only invited review articles.

Case reports are evaluated for publication only if they describe a new entity, a new or a very rare histopathological and/or molecular characteristic. Case reports that do not fulfill these criteria will be immediately rejected by editorial decision.

### ETHICAL CONSIDERATIONS

Articles must be in accordance with the "International Committee of Medical Journal Editors: Uniform Requirements for Manuscripts Submitted to Biomedical Journals" (<http://www.icmje.org/>).

A submitted article must not have been previously published in print or electronic format and must not be under consideration for publication at another journal or electronic media, and, if accepted, must not be published elsewhere in any languages in a similar form. Studies presented at a meeting or symposium or in electronic form will be considered for publication if this is stated.

If any previously published quoted passages, tables, figures, etc. are used in the article, authors should obtain written permission from the publication rights holders and the authors, and should specify this in the article.

Authors are responsible for their articles' conformity to ethical rules.

All new submissions are screened for plagiarism by similarity check software (Ithenticate).

- For studies involving human subjects/material/data: The study protocol for human experimentation must conform to ethical guidelines established in the World Medical Association Declaration of Helsinki (<http://www.healthscience.net/resources/declaration-of-helsinki/>). Therefore, all articles submitted for publication must specify that the ethic standards of the above committee were adhered to. Authors must specify in the method(s) section that they performed the study according to these principles and that they obtained "approval" from their institution's ethics committees and informed consent from the participants. **Any necessary permission documents from local and international ethic committees or institutional review board (IRB) approval must also be uploaded with the manuscript.**

**If the authors claim that the study does not need ethics committee approval, the journal will ask authors for confirmation from an ethics committee indicating that the study does not need ethics committee approval.**

- For studies involving animals: Articles reporting the results of experimental studies on animals must include a statement that

study protocol was approved by the animal ethics committee of the relevant institution and that the study was conducted in accordance with "Guide for the Care and Use of Laboratory Animals" (<http://www.nap.edu/catalog/5140.html>). **Authors must upload the approval of the relevant ethics committee with the manuscript.**

### THE CONFIDENTIALITY and PRIVACY OF PATIENTS and STUDY PARTICIPANTS

Authors should avoid use of descriptive information such as patient names, initials, reference numbers or full photographs in their article. Such information can be published if absolutely necessary for scientific reasons and only after obtaining written "informed consent" from the patient (or parents, or legal guardian).

For individual case reports, a statement confirming that "informed consent" provided by the patient or a legally authorized representative must be included in the methods section of the manuscript. Authors must also include such a statement in their cover letter. An example for a cover letter can be found at <http://www.turkjpath.org/instructions.php3?id=92>. The authors should keep a copy of the written informed consent form and should upload it as a separate file if requested by the Editorial Office.

### DECLARATION of CONFLICT of INTERESTS

A conflict of interest is defined as any financial, personal, academically competitive or intellectual relationship between the author, reviewer or editor that involves article submission, referee evaluation, editorial decision and author-referee-editor correspondence and that could lead to a prejudiced and unfair action during the evaluation stage.

The authors must declare any financial relationship or conflict of interest that needs to be known regarding the study. All financial contributions and sponsorships for the study and all financial relationships and conflicts of interest should be included in the copyright transfer form that accompanies the article. The authors must explain the study sponsor's role in collecting, evaluating and analyzing the data, writing the manuscript and submitting it for publication. If there is no conflict of interest, this section must include a "The authors declare no conflict of interest" statement. All sources of funding should be mentioned in the manuscript.

The evaluation process for the article is not started if a conflict of interest statement signed by corresponding author is not present at the time the manuscript is submitted. If a conflict of interest becomes apparent after the article is published, the journal may make an official correction or retract the article.

The reviewers also need to declare all their interests that they feel may represent a potential conflict of interest. The reviewers must declare to the editor any conflicts of interest that may prejudice their evaluation of the article and must avoid evaluation of certain articles if a potential prejudice is present.

The editors who will make the final decision on the articles cannot have any personal, professional or financial relationship with any of the authors of the articles they will decide on. The editors will also try to avoid any reviewers who have a possible conflict of interest, for example those working in the same department or facility as any of the authors.

The editors and publisher assume no responsibility regarding features and explanations of any commercial products advertised in the journal.

Turkish Journal of Pathology requires all authors to acknowledge, on the title page of their manuscript, all funding sources that supported their work, as well as all institutional or corporate affiliations of the authors that might pose a conflict of interest in connection with the submitted manuscript.

### AUTHORSHIP & CONTRIBUTORSHIP STATEMENT

Every author specified in the manuscript should have properly contributed to the article, should meet the authorship criteria and is responsible for the contributed content. Each section in the article regarding study results and integrity should be the under the responsibility of at least one author. The Turkish Journal of Pathology accepts the criteria of the International Committee of Medical Journal Editors (<http://www.icmje.org>). The author should accordingly;

1. Make a significant contribution to the planning and design or analysis or interpretation or both of the study,
2. Make a contribution to the writing or revision of scientific content of the manuscript,
3. Approve the final version of the manuscript that is going to be published,
4. Accept responsibility for the appropriate analysis and resolution of questions related to the integrity and accuracy of a section of a study and for all aspects of the study.

For multicenter studies, all declared authors should meet the above authorship criteria. Contribution such as searching for and finding financial support for the study or only collecting data or general help and guidance for those conducting the study do not confer the right to authorship. Individuals who have contributed to the study but do not meet authorship criteria can be included in the "Acknowledgements" section after their consent is obtained. The author order should be the joint decision of all authors. The editor can ask the individual contribution of each author and may find it appropriate to publish this information to prevent an unnecessary increase in the number of authors or unfair academic or similar benefits.

### ADVERTISING

The Turkish Journal of Pathology accepts advertising for products and services that are of interest to users professionally. The decision of acceptance is subject to consultation with the journal's board of directors. The board of directors reserves the right to accept and reject advertising proposals.

### REVENUE SOURCES

The sources of income of the Turkish Journal of Pathology include institutional support (Federation of the Turkish Pathology Societies) and display advertising for pharmaceutical and nonpharmaceutical products.

### RELATIONS WITH EDITOR(S), AUTHOR(S) AND REVIEWER(S)

Editors do not share information regarding articles (manuscript receipt, review process, reviewer opinions or final results) with anyone except authors and reviewers. Reviewers and editorial board members cannot discuss manuscripts in a public manner. Editors must send copies of the manuscript to the editor-in-chief for final decision once their review is complete. Reviews cannot be printed or disclosed without permission of the author and editor. Care is taken to keep the identities of the reviewers confidential. In some cases, the editor may decide to send the reviewer opinions on the manuscript to other reviewers reviewing the same article to inform them during the process. All manuscripts submitted will be subjected to peer review by the editorial board, and the authors will be informed within four weeks. Editorial board reserves the right to make some revisions in the article. Revised articles should also be accompanied by a unique letter with responses to reviewers' comments. Articles that do not comply with the journal requirements listed below may be returned without review at the discretion of the editors. If the journal requests a revision, the author(s) should submit the revised version within three months. Otherwise, it will be considered a new submission.

### CHANGES IN AUTHORSHIP

Corresponding author is responsible for correct declaration of the author list during the initial submission. Requests to change the

authorship (e.g. to include or exclude a co-author) must be made by sending an official letter to the editorial office signed by all authors to show they agree on the change(s). New authors must also sign the copyright and authors agreement form. Changes to the authorship will not be allowed after the acceptance of the manuscript.

### PREPARATION of MANUSCRIPT

Manuscript should be typed in 12 pt (Times New Roman), double spaced throughout with margins of 2.5 cm, and pages must be numbered on the right bottom of the page. Manuscripts must be in accordance with the International Committee of Medical Journal Editors: Uniform Requirements for Manuscripts Submitted to Biomedical Journals (<http://www.icmje.org/>). Original articles should not exceed 15 double spaced typewritten pages, and case reports should not exceed 10 pages. Articles should be sent in either "doc" or "txt" format and organized as follows:

**a. Title page:** Authors must submit the title page as a separate file. The title page should contain the manuscript title, authors' names, academic titles and affiliations, a running title not exceeding 40 characters and the address for manuscript correspondence including e-mail address and telephone and fax numbers. If the article was presented at a scientific meeting, a complete statement including the date and place of the meeting should be provided. An "acknowledgement(s)" section should be placed on the title page to thank those who helped the study or preparation of the manuscript, if any. All funding sources that supported the work and the institutional and/or corporate affiliations of the authors should be acknowledged on the title page. This section contains statements of gratitude for personal, technical or material help, etc. Conflict of interest statement should also be included.

**b. Abstract and keywords:** All articles should contain an abstract. Authors should include the abstract and the key words in the main text file. Abstracts must be no longer than 250 words. The abstracts should be structured [objective, materials and methods, results and conclusions]. Case reports should also include a structured abstract [objective, case report(s), and conclusion]. Abbreviations and institutional information should not be written in the abstract. The authors should list three to five key words or phrases taken from Index Medicus Medical Subject Headings (<http://www.nlm.nih.gov/mesh/MBrowser.html>) at the end of this section.

**c. Maintext:** Original articles should be organized in six main headings: abstract, keywords, introduction, material and method, results, and discussion. Abbreviations should be defined at first mention in the text and in each table and figure. If a brand name is cited, supply the manufacturer's name and address (city and state/country). Case reports should include the following identifiable sections: abstract, keywords, introduction, case report(s), and discussion.

Figure legends should be included in the main text file after the references.

**d. References:** References should be arranged according to the "Uniform Requirements for Manuscripts Submitted to Biomedical Journals" rules developed by "International Committee of Medical Journal Editors (ICMJE)". Some examples have been provided for frequently used reference types. The [http://www.nlm.nih.gov/bsd/uniform\\_requirements.html](http://www.nlm.nih.gov/bsd/uniform_requirements.html) site should be used for guidance on other types of references not provided here. Each reference should be numbered and listed according to their order in the text. They should be referred to in parentheses as "(...)" at the end of sentences within the text. The author(s) are responsible for the accuracy of the references. Journal titles should be abbreviated according to Index Medicus. Refer to the "List of Journals Indexed in Index Medicus" for abbreviations of journal names, or access the list at <http://www.nlm.nih.gov/tsd/serials/lji.html>. Abbreviations are not used for journals that are not listed in the Index Medicus. Only published articles or articles "in press" can be used in references. All authors names must be written, **do not use "et al"**.

Link for EndNote Style: [https://endnote.com/style\\_download/turkish-journal-of-pathology-turk-patoloji/](https://endnote.com/style_download/turkish-journal-of-pathology-turk-patoloji/)

#### Journals:

Halpern SD, Ubel PA, Caplan AL. Solid-organ transplantation in HIV-infected patients. *N Engl J Med.* 2002;347:284-7. PMID: 12140307 DOI: 10.1056/NEJMsb020632

#### Books:

Breedlove GK, Schorfheide AM. Adolescent pregnancy. 2nd ed. Wiecek RR, editor. White Plains (NY): March of Dimes Education Services; 2001.

#### Book chapters:

Meltzer PS, Kallioniemi A, Trent JM. Chromosome alterations in human solid tumors. In: Vogelstein B, Kinzler KW, editors. *The genetic basis of human cancer.* New York: McGraw-Hill; 2002. 93-113.

#### Meeting announcements:

Christensen S, Oppacher F. An analysis of Koza's computational effort statistic for genetic programming. In: Foster JA, Lutton E, Miller J, Ryan C, Tettamanzi AG, editors. *Genetic programming. EuroGP 2002: Proceedings of the 5th European Conference on Genetic Programming; 2002 Apr 3-5; Kinsdale, Ireland.* Berlin: Springer; 2002. p. 182-91.

**e. Tables:** Each table must be typed double-spaced on a separate page and should be included in the main text file, after the references and figure legends. Tables should be numbered consecutively with Roman numerals in order of appearance in the text and should include a short descriptive title typed directly above and essential footnotes including definitions of abbreviations below. They should be self-explanatory and should supplement rather than duplicate the material in the text.

**f. Figures:** All figures should be numbered sequentially in the text with Arabic numbers and should be referred to in parentheses within the text. Art should be created / scanned and saved as either TIFF or JPEG format, submitted as a separate file, and not embedded in the text file. Electronic photographs, radiographs, CT scans, and scanned images **must have a resolution of at least 600 dpi and 3861x2048 pixels and must be submitted as either .tiff or .jpeg files.** Writing any text on the figures should be avoided as much as possible.

**g. Figure legends:** Include legends for all figures. Legends should appear on a separate page after the references, should be brief and specific, and should include magnification and the stain used. Abbreviations and symbols used in the figures must be denoted in the legend.

#### SUBMISSION OF ARTICLES

All manuscripts must be submitted on-line through the web site (<http://www.turkjpath.org/submit/>).

The corresponding author should complete the "Turkish Journal of Pathology Author Responsibility and Copyright Transfer Form" during the submission of manuscript.

#### SUBMISSION CHECKLIST

1. Copyright transfer form (to be filled electronically during submission)
2. Cover letter
3. Proof of ethical approval
4. Title page (separate file)
5. Abstract
6. Keywords (3-5)
7. Maintext file (including the title, abstract, keywords, references, figure legends, and tables)
8. Figures (separate file)

#### REPRINTS

Authors will receive a complimentary electronic (PDF) reprint of the article. No hardcopy complimentary reprints are provided by the publisher.

#### COPYRIGHT

Copyright of an accepted manuscript should be transferred to the Federation of Turkish Pathology Societies. This transfer covers the exclusive rights to reproduce and distribute the article. Authors may make this published article available free online provided that the source of the published article is cited and the Federation of Turkish Pathology Societies is mentioned as copyright holder. In such a case, a link to the original article in Turkish Journal of Pathology accompanied by the following statement should also be created: "The original article is available at <http://www.turkjpath.org>". All articles published in this journal are protected by copyright. Manuscripts, figures and tables published in the Turkish Journal of Pathology can be reproduced, archived in a retrieval system, by providing proper citations. If there are advertising purposes for using Federation's intellectual properties please contact the Federation of Turkish Pathology Societies. The Federation of Turkish Pathology Societies does not accept any legal responsibility for errors, omissions or claims with respect to information published in the Journal. The "Turkish Journal of Pathology Author Responsibility and Copyright Transfer Form" must be filled out and uploaded by the corresponding author with the main manuscript. If the form is not completed as instructed by the primary author, the manuscript will not be considered for peer review. Each author should have participated sufficiently in the work, and the corresponding author should state this. Each field may include more than one author. The corresponding author accepts that all information included in the manuscript is complete and has been agreed on by all authors. Any conflict of interest obtained by financial or personal relationship and/or financial and material support should be reported by the corresponding author.

#### OPEN ACCESS POLICY

Turkish Journal of Pathology adopts open access policy. Open access to information benefits the humanity as it improves the global value of information. Turkish Journal of Pathology also supports the Budapest Open Access Initiative that was signed on September 12, 2002. Thus, the open access policies adopted by the editorial board of Turkish Journal of Pathology can be found at <http://www.budapestopenaccessinitiative.org/boai-10-recommendations>. All articles published in Turkish Journal of Pathology are licensed with "Creative Commons Attribution 4.0 International License". This license entitles all parties to copy, share and redistribute all the articles, data sets, figures and supplementary files published in this journal in data mining, search engines, web sites, blogs and other digital platforms under the condition of providing references. Open access is an approach that eases the interdisciplinary communication and encourages cooperation among different disciplines. Turkish Journal of Pathology, therefore, contributes to its own field by providing more access to its articles and a more transparent review process.

#### EDITORIAL CORRESPONDENCE

Prof. Dr. Volkan ADSAY (Editor-in-Chief)  
Koç University, Department of Pathology  
Istanbul, Turkey  
E-mail: [editor@turkjpath.org](mailto:editor@turkjpath.org)

#### PUBLISHER CORRESPONDENCE

Bulus Design and Printing  
Bahriye Üçok Caddesi No: 9/1, Beşevler,  
06500, Ankara, Turkey  
Tel : +90 (312) 223 55 44; +90 (312) 222 44 06  
Fax: +90 (312) 222 44 07  
E-mail: [bulus@bulustasarim.com.tr](mailto:bulus@bulustasarim.com.tr)

## CONTENTS

## LETTER TO EDITOR

193

**What's in a Name? Michael N. Marsh, BTh, DPhil, DM, DSc, FRCP\***

Arzu ENSARI

## ORIGINAL ARTICLES

196

**The Role of Immunocytochemical Markers to Differentiate Primary from Secondary Neoplastic Hepatic Masses: A Diagnostic Challenge on Cytology**

Jenna B BHATTACHARYA, Shyam Lata JAIN, Subbarayan DEVI

203

**Metastases to the Stomach:****Clinicopathologic Features of Metastases Mimicking Gastric Primaries**

Ali Yılmaz ALTAY, Melek BÜYÜK, İlker ÖZGÜR, Ali Fuat Kaan GÖK, Bilger ÇAVUŞ, Esra AYDIN, Sezai VATANSEVER, Mine GÜLLÜOĞLU

212

**Cholemic Nephrosis: An Autopsy Study of a Forgotten Entity**

Valli PRIYAA, Bheemanathi Hanuman SRINIVAS, Debasis GOCHHAIT, Rajesh NACHIAPPA GANESH, Bhawana A BADHE, PS PRIYAMVADA, Deepak AMALNATH, Siddhartha DAS, Kusa Kumar SHAHA

219

**Peripheral Lymphadenopathy in Children:****Cytomorphological Spectrum and Interesting Diagnoses**

Arti KHATRI, Nidhi MAHAJAN, Sonali MALIK, Kanika RASTOGI, Parveen KUMAR, Diganta SAIKIA

226

**What Would Next Generation Sequencing Bring to the Diagnosis and Treatment of Sarcomas? A Series of 20 Cases, a Single Institution's Experience**

İbrahim KULAÇ, Pınar BULUTAY, Çisel AYDIN MERİÇÖZ

233

**Does the Distance of the Tumor from the Surgical Margin Affect Biochemical Recurrence in Patients with Pathological Organ-Confined Prostate Cancer?**

Ayse OZBEK, Ridvan OZBEK, Mehmet DUVARCI, Olcay KANDEMİR

239

**Prognostic and Predictive Significance of PD-L1 Expression in Non-Small Cell Lung Cancer Patients: A Single-Center Experience**

Hacı ARAK, Aydın AYTEKİN, Ozlem CANOZ, Metin OZKAN



---

**CASE REPORTS**

---

**249****Primary Myeloid Sarcoma of Ovary: A Case Report and Review of the Literature**

Sevda AKYOL, Fatma OZ ATALAY

**254****Cysts that Still Persist: A Case Series of Cysticercosis on Histopathological Evaluation**

Flora D LOBO, Kudurugundi Basavaraju VATSALA, Deepa Adiga A S, Sharada RAI

**258****Giant IgG4-Related Pseudotumor of the Esophagus Resected with Endoscopic Submucosal Dissection: A Case Report and Review of the Literature**

Nese EKINCI, Duygu UNAL KOCABEY, Eylül GUN, Fatih ASLAN

**264****A Case of Lafora Disease Diagnosed by Axillary Skin Biopsy**

Elife KIMILOĞLU, Pelin AKBAŞ, Özgül ESEN ÖRE, Çağla TURAN

**266****Clinicopathologic and Molecular Analysis of Inflammatory Pseudotumor-Like Follicular/Fibroblastic Dendritic Cell Sarcoma: A Case Report and Review of Literature**

Bryan MORALES-VARGAS, Kristin DEEB, Deniz PEKER