

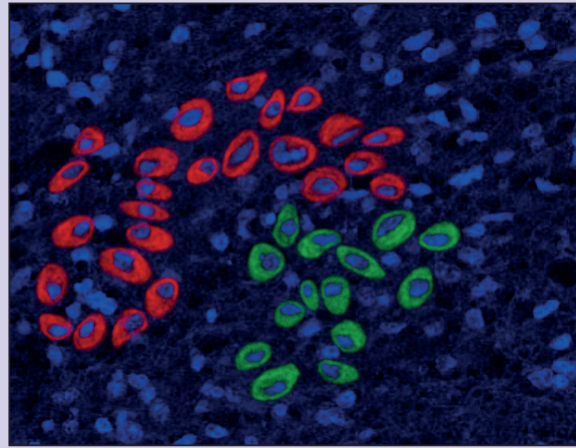
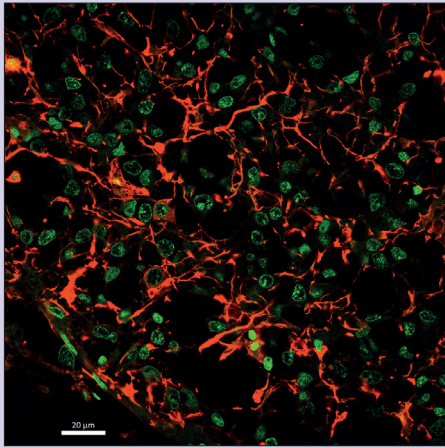


Turkish Journal of PATHOLOGY

May 2023

Volume 39

Number 2



25-Year Storage of Human Choroid Plexus in Methyl Salicylate Preserves Its Antigen Immunoreactivity

Analysis of SMARCA4 and SMARCA2 Loss in Lung Sarcomatoid Carcinomas

Whole Slide Images in Artificial Intelligence Applications in Digital Pathology: Challenges and Pitfalls

Development of Glioblastoma from Stem Cells to a Full-Fledged Tumor

A Rare Case of A Low-Grade Inflammatory Leiomyosarcoma/ Histiocyte-Rich Rhabdomyoblastic Tumor in the Neck of An Adolescent Male

Histoplasmosis of the Head and Neck Region Mimicking Malignancy: A Clinic-Pathological Predicament

Impact of COVID-19 Pandemic on Pathology Residency Program: An Experience from India

Neuroendocrine Tumor of the Fallopian Tube and Serous Adenocarcinoma of the Ovary: Multicentric Primary Tumors



Turkish Journal of Pathology

Official Journal of the Federation of Turkish Pathology Societies

Published three issues per year



Editor-in-Chief

Volkan ADSAY, Koc University, Gastrointestinal-Hepatopancreatobiliary Pathology, (editor@turkjpath.org)

Senior Associate Editors

Kutsal YORUKOGLU, Dokuz Eylul University, Uropathology-Quality-Laboratory Techniques, (kutsal.yorukoglu@deu.edu.tr)
 Alp USUBUTUN, Hacettepe University, Gynecopathology- Quality, (ausubutu@hacettepe.edu.tr)
 Umit COBANOGLU, Karadeniz Technical University, Hematopathology, (drumitcoban@yahoo.com)
 Fazilet KAYASELCUK, Baskent University, Gastrointestinal-Hepatopancreatobiliary Pathology, (faziletks@yahoo.com)

Deputy Executive Editors

Pelin BAGCI, Marmara University, Gastrointestinal-Hepatopancreatobiliary- Endocrine Pathology, (pelinbagci@gmail.com-editorialoffice@turkjpath.org)
 Burcin PEHLIVANOGLU, Dokuz Eylul University, Gastrointestinal-Hepatopancreatobiliary- Molecular Pathology, (burcinp@yahoo.com-editorialoffice@turkjpath.org)

Associate Editors

Ovgu AYDIN, Istanbul University, Dermatopathology, (ovguaydin@gmail.com)
 Sergulen DERVISOGLU, Medipol University, Soft Tissue & Bone Pathology, (sergulen.dervisoglu@gmail.com)
 Basak DOGANAVSARGIL, Ege University, Gastrointestinal Pathology, (bdoganavsargil@yahoo.com)
 Sirin Funda EREN, Istanbul Kent University, Gynecopathology, (fundatanay@gmail.com)
 Aydin ISISAG, Celal Bayar University, Hematopathology, (aydinisisag@superonline.com)
 Mehmet KEFELI, Ondokuz Mayıs University, Endocrine Pathology, (mehmetkefeli@gmail.com)
 Tolgay OCAL, Mayo Clinic, Cytopathology, (tolgay@cox.net)
 Onder ONGURU, Anadolu Medical Center, Neuropathology, (onguruo@yahoo.com)
 Erdener OZER, Dokuz Eylul University, Pediatric Pathology, (erdener.ozar@deu.edu.tr)
 Ozgul SAGOL, Dokuz Eylul University, Hepatopancreatobiliary Pathology, (ozgul.sagol@deu.edu.tr)
 Sulen SARIOGLU, Dokuz Eylul University, Head & Neck Pathology, (sulen.sarioглу@deu.edu.tr)
 Banu SIS, University of Alberta, Nephropathology, (bsis@ualberta.ca)
 Merva SOLUK TEKKESIN, Istanbul University, Oral Pathology, (merva.soluktekkessin@gmail.com)
 Aykut UREN, Georgetown University, Experimental Pathology, (au26@georgetown.edu)
 Ali VERAL, Ege University, Lung Pathology, (veral.ali@gmail.com)
 Osman ZEKIOGLU, Ege University, Breast Pathology, (osman.zekioglu@gmail.com)

International Editorial Board

Sylvia L. ASA, Case Western Reserve University, United States
Jacques Patrick BARBET, Paris Descartes University, France
Nesimi BUYUKBABANI, Istanbul University, Turkey
Eduardo CALONJE, St Thomas' Hospital, United Kingdom
Fatima CARNEIRO, University of Porto, Portugal
Christopher P. CRUM, Harvard Medical School, United States
Beyhan DEMIRHAN, Baskent University, Turkey
Ahmet DOGAN, Memorial Sloan Kettering Cancer Center, United States
Arzu ENSARI, Ankara University, Turkey
Jonathan I. EPSTEIN, Johns Hopkins University, United States
Yener S. EROZAN, Johns Hopkins University, United States
Vincenzo EUSEBI, University of Bologna, Italy
Agnes FOGO, Vanderbilt University, United States
Andrew FOLPE, Mayo Clinic, United States
Maria Pia FOSCHINI, University of Bologna, Italy
Gokhan GEDIKOGLU, Hacettepe University, Turkey
Omer GUNHAN, TOBB University, Turkey
Isin KILICASLAN, Istanbul University, Turkey
Gunter KLOPPEL, Technical University of Munich, Germany
Isinsu KUZU, Ankara University, Turkey
Daniela MASSI, University of Florence, Italy
Ozgun METE, University of Toronto, Canada
Sukru Oguz OZDAMAR, Yuksek Ihtisas University, Turkey
Anil Vasdev PARWANI, Ohio State University, United States
Raymond W. REDLINE, Case Western Reserve University, United States
Miguel REYES-MÚGICA, The University of Pittsburgh, United States
Hemamali SAMARATUNGA, University of Queensland, Australia
Aydin SAV, Yeditepe University, Turkey
Fernando SCHMITT, University of Porto, Portugal
Hiroyuki SHIMADA, Stanford University, United States
Manuel Sobrinho SIMÕES, University of Porto, Portugal
Figen SOYLEMEZOGLU, Hacettepe University, Turkey
Aysegul SAHIN, MD Anderson Cancer Center, United States
Henry TAZELAAR, Mayo Clinic, United States
Tarik TIHAN, University of California San Francisco, United States
Toyonori TSUZUKI, Aichi Medical University, Japan
Silvia UCCELLA, University of Insubria, Italy
Gordan M. VUJANIC, Cardiff University, United Kingdom
Suzan ZORLUDEMIR, Cukurova University, Turkey
Olca BASTURK, Memorial Sloan Kettering Cancer Center, United States

Turkish Journal of Pathology

Official Journal of the Federation of Turkish Pathology Societies



Advisory Board of This Issue

Huseyin BALOGLU	Basak DOGANAVSARGIL	Sevilay KARAHAN	Haldun UMUDUM
Kemal BEHZATOGLU	Gulen DOGUSOY	Figen SOYLEMEZOGLU	Sulen SARIOGLU
Sultan CALISKAN	Sahande ELAGOZ	Yurdanur SULLU	Banu YAMAN
Gulden DINIZ	Mehmet GAMSIZKAN	Ayse Nur UGUR KILIC	Demir Kursat YILDIZ

Consultant in Biostatistics

Sevilay KARAHAN Yagmur ZENGİN

Redaction

Dr. Aydın YULUG

 Turkish Journal of Pathology has been a member of the DOI* system since March 2010.



iThenticate is used by Turkish Journal of Pathology to prevent scientific misconduct and to detect plagiarism.



This journal is a member of, and subscribes to the principles of, the Committee on Publication Ethics (COPE) www.publicationethics.org

Owner on behalf of Federation of the Turkish Pathology Societies

Funda YILMAZ BARBET

Ege University, Faculty of Medicine, Department of Pathology,
Izmir, Turkey Tel: +90 (232) 390 4558

Publishing Manager

H. Sitki TUZLALI

Vali Konagi Caddesi, Ferah Sokak, Dogu Sitesi B1 Blok Daire: 5,
Nisantasi, Istanbul, Turkey

Head Office

Sezai Selek Sokak, Sevim Apt, No: 7/1, Nisantasi, Istanbul, Turkey

Editor-in-Chief

Volkan ADSAY

Koc University, Department of Pathology, Istanbul, Turkey

Publishing House

BULUS Design and Printing

Bahriye Ucek Caddesi No: 9/1, Besevler, 06500, Ankara, Turkey
Tel: +90 (312) 223 55 44 +90 (312) 222 44 06
Fax: +90 (312) 222 44 07 E-mail: bulus@bulustasarim.com.tr

Publication Type

Periodical

Published three issues per year: January, May, September

AIMS AND SCOPE

The Journal's aims are to publish articles in all fields of surgical pathology including autopsy, cytopathology, digital pathology (including information technologies) and molecular pathology as well as clinicopathological studies.

The Journal is open to all studies using immunohistochemical, ultrastructural techniques and molecular methods in the diagnostic pathology field. Studies that recommend new techniques and methods, electronic education, and quality control and quality assurance-related studies are also within the journal's scope.

Articles published in this journal are evaluated in an independent and unbiased, double blinded peer-reviewed fashion by an advisory committee. Turkish Journal of Pathology mainly publishes original articles (clinical, research and laboratory studies). Occasionally, "invited reviews", "meeting or conference reports", "book reviews", "biographies" and "letter to the editor" (opinions, interpretation and new information on various aspects of pathology) may also be published. Case reports are evaluated for publication only if a new entity, a new or a very rare histopathological and/or molecular characteristic is described.

All articles must be written in English, and should include abstract and key words. Articles must be in accordance with the "International Committee of Medical Journal Editors: Uniform Requirements for Manuscripts Submitted to Biomedical Journals" (<http://www.icmje.org/>). Study protocol for human experimentation must conform to the ethical guidelines established in the "World Medical Association Declaration of Helsinki"

(<http://www.healthscience.net/resources/declaration-of-helsinki/>). Articles reporting the results of experimental studies on animals must be conducted in accordance with "Guide for the Care and Use of Laboratory Animals" (<http://www.nap.edu/catalog/5140.html>).

Abstracting and Indexing

The Turkish Journal of Pathology is indexed by:

- Web of Science-Emerging Sources Citation Index
- National Library of Medicine-Medline/Pubmed
- HINARI
- Elsevier – SCOPUS
- Index Copernicus
- DOAJ
- EBSCO
- Google Scholar
- Microsoft Academic Search
- WorldCat (OCLC)
- TUBİTAK/ULAKBİM
- Turk Medline
- Turkish Citation Index
- SOBIAD

Editor-in-Chief

Prof. Volkan ADSAY, MD

Koc University, Department of Pathology
Istanbul, Turkey
Tel : +90 (532) 258 21 96
E-mail: editor@turkjpath.org

Advertising and Publishing Services

Bulus Design and Printing
Bahriye Ucoğ Caddesi No: 9/1
Besevler, 06500, Ankara, Turkey
Tel : +90 (312) 223 55 44; +90 (312) 222 44 06
Fax: +90 (312) 222 44 07
E-mail: bulus@bulustasarim.com.tr

Permission Requests

Manuscripts, figures and tables published in the Turkish Journal of Pathology can be reproduced, archived in a retrieval system, by providing proper citations.

If there are advertising purposes for using Federation's intellectual properties please contact the Federation of Turkish Pathology Societies.

Subscriptions

Tables of contents, abstracts and full texts of all articles published are accessible free of charge through the web site <http://www.turkjpath.org> since 2006.

Material Disclaimer

Scientific and legal responsibilities pertaining to the papers belong to the authors. Contents of the manuscripts and accuracy of references are also at the authors' responsibility. The Federation of Turkish Pathology Societies, Editor-in-Chief, Editors, Editorial and Advisory Board members and the Publisher decline responsibility for errors or any consequences arising from the use of information contained in this journal.

Open Access Policy

Turkish Journal of Pathology is published as open access under the [Creative Commons Attribution License \(CC BY\)](https://creativecommons.org/licenses/by/4.0/). This license means that with the publication all articles can be accessed, shared, downloaded and reused as long as the proper citation is given. Turkish Journal of Pathology adopts the Open Access Declaration published by [Budapest Open Access Initiative](https://www.turkjpath.org/) in Feb, 2002.

Contact

Patoloji Dernekleri Federasyonu
Hilal Mah. Cezayir Cad. No:36/2 Cankaya ANKARA
E-mail: editor@turkjpath.org editorialoffice@turkjpath.org

INSTRUCTIONS FOR AUTHORS

SCOPE

Turkish Journal of Pathology (<http://www.turkjpath.org>) (ISSN:1018-5615 / E-ISSN:1309-5730) is the official journal of the Federation of Turkish Pathology Societies and is devoted to the continuing education of national and international practicing pathologists, and to provide a forum for social and scientific communication in the field. The Journal is a peer-reviewed scientific journal published every four months, three times a year (January, May, September), and aims to reach all relevant national and international medical institutions and persons. Articles in English are welcome.

MANUSCRIPT TYPES

Studies that emphasize these aims provide the basis of publication including original articles, reviews, abstracts from annual meetings, letters to the editor, book reviews, biographies and articles with social content.

Turkish Journal of Pathology accepts only invited review articles.

Case series are evaluated as case reports and are not considered as original articles unless they provide novel results or new techniques/biomarkers/molecular studies/prognostic markers etc. that have not previously been reported. In equivocal situations, the article type is defined by the editor and their decision is final.

Case reports are evaluated for publication only if they describe a new entity, a new or a very rare histopathological and/or molecular characteristic. Case reports that do not fulfill these criteria will be immediately rejected by editorial decision.

ETHICAL CONSIDERATIONS

Articles must be in accordance with the "International Committee of Medical Journal Editors: Uniform Requirements for Manuscripts Submitted to Biomedical Journals" (<http://www.icmje.org/>).

A submitted article must not have been previously published in print or electronic format and must not be under consideration for publication at another journal or electronic media, and, if accepted, must not be published elsewhere in any languages in a similar form. Studies presented at a meeting or symposium or in electronic form will be considered for publication if this is stated.

If any previously published quoted passages, tables, figures, etc. are used in the article, authors should obtain written permission from the publication rights holders and the authors, and should specify this in the article.

Authors are responsible for their articles' conformity to ethical rules.

All new submissions are screened for plagiarism by similarity check software (Ithenticate).

- For studies involving human subjects/material/data: The study protocol for human experimentation must conform to ethical guidelines established in the World Medical Association Declaration of Helsinki (<http://www.healthscience.net/resources/declaration-of-helsinki/>). Therefore, all articles submitted for publication must specify that the ethic standards of the above committee were adhered to. Authors must specify in the method(s) section that they performed the study according to these principles and that they obtained "approval" from their institution's ethics committees and informed consent from the participants. **Any necessary permission documents from local and international ethic committees or institutional review board (IRB) approval must also be uploaded with the manuscript during the initial submission.**

If the authors claim that the study does not need ethics committee approval, the journal will ask authors for confirmation from an ethics committee indicating that the study does not need ethics committee approval and/or waiver of consent from IRB.

- For studies involving animals: Articles reporting the results of experimental studies on animals must include a statement that study protocol was approved by the animal ethics committee of the relevant institution and that the study was conducted in accordance with "Guide for the Care and Use of Laboratory Animals" (<http://www.nap.edu/catalog/5140.html>). **Authors must upload the approval of the relevant ethics committee with the manuscript during the initial submission.**

THE CONFIDENTIALITY and PRIVACY OF PATIENTS and STUDY PARTICIPANTS

Authors should avoid use of descriptive information such as patient names, initials, reference numbers or full photographs in their manuscript. Such information can be published if absolutely necessary for scientific reasons and only after obtaining written "informed consent" from the patient (or parents, or legal guardian).

For individual case reports, a statement confirming that "informed consent" provided by the patient or a legally authorized representative must be included in the methods section of the manuscript. Authors must also include such a statement in their cover letter. The authors should keep a copy of the written informed consent form and should upload it as a separate file if requested by the Editorial Office.

DECLARATION of CONFLICT of INTERESTS

A conflict of interest is defined as any financial, personal, academically competitive or intellectual relationship between the author, reviewer or editor that involves article submission, referee evaluation, editorial decision and author-referee-editor correspondence and that could lead to a prejudiced and unfair action during the evaluation stage.

Turkish Journal of Pathology requires all authors to acknowledge, on the title page of their manuscript, all funding sources that supported their work, as well as all institutional or corporate affiliations of the authors that might pose a conflict of interest in connection with the submitted manuscript.

The authors must declare any financial relationship or conflict of interest that needs to be known regarding the study. All financial contributions and sponsorships for the study and all financial relationships and conflicts of interest should be included in the title page of the manuscript. The authors must explain the study sponsor's role in collecting, evaluating and analyzing the data, writing the manuscript and submitting it for publication. If there is no conflict of interest, this section must include a "The authors declare no conflict of interest" statement. All sources of funding should be mentioned in the manuscript.

The evaluation process for the article is not started if a conflict of interest statement is not present at the time the manuscript is submitted. If a conflict of interest becomes apparent after the article is published, the journal may make an official correction or retract the article.

The reviewers also need to declare all their interests that they feel may represent a potential conflict of interest. The reviewers must declare to the editor any conflicts of interest that may prejudice their evaluation of the article and must avoid evaluation of certain articles if a potential prejudice is present.

The editors who will make the final decision on the articles cannot have any personal, professional or financial relationship with any of the authors of the articles they will decide on. The editors will also try to avoid any reviewers who have a possible conflict of interest, for example those working in the same department or facility as any of the authors.

The editors and publisher assume no responsibility regarding features and explanations of any commercial products advertised in the journal.

AUTHORSHIP & CONTRIBUTORSHIP STATEMENT

Every author specified in the manuscript should have properly contributed to the manuscript, should meet the authorship criteria and is responsible for the contributed content. Each section in the manuscript regarding study results and integrity should be the under the responsibility of at least one author. The Turkish Journal of Pathology accepts the criteria of the International Committee of Medical Journal Editors (<http://www.icmje.org>). The author(s) should accordingly;

1. Make a significant contribution to the planning and design or analysis or interpretation or both of the study,
2. Make a contribution to the writing or revision of scientific content of the manuscript,
3. Approve the final version of the manuscript that is going to be published,
4. Accept responsibility for the appropriate analysis and resolution of questions related to the integrity and accuracy of a section of a study and for all aspects of the study.

For multicenter studies, all declared authors should meet the above authorship criteria. Contribution such as searching for and finding financial support for the study or only collecting data or general help and guidance for those conducting the study do not confer the right to authorship. Individuals who have contributed to the study but do not meet authorship criteria can be included in the "Acknowledgements" section after their consent is obtained. The author order should be the joint decision of all authors. The editor can ask the individual contribution of each author and may find it appropriate to publish this information to prevent an unnecessary increase in the number of authors or unfair academic or similar benefits.

ADVERTISING

The Turkish Journal of Pathology accepts advertising for products and services that are of interest to users professionally. The decision of acceptance is subject to consultation with the journal's board of directors. The board of directors reserves the right to accept and reject advertising proposals.

REVENUE SOURCES

The sources of income of the Turkish Journal of Pathology include institutional support (Federation of the Turkish Pathology Societies) and display advertising for pharmaceutical and nonpharmaceutical products.

RELATIONS WITH EDITOR(S), AUTHOR(S) AND REVIEWER(S)

Editors do not share information regarding articles (manuscript receipt, review process, reviewer opinions or final results) with anyone except authors and reviewers. Reviewers and editorial board members cannot discuss manuscripts in a public manner. Editors must send copies of the manuscript to the editor-in-chief for final decision once their review is complete. Reviews cannot be printed or disclosed without permission of the author and editor. Care is taken to keep the identities of the reviewers confidential. In some cases, the editor may decide to send the reviewer opinions on the manuscript to other reviewers reviewing the same article to inform them during the process. All manuscripts submitted will be subjected to peer review by the editorial board, and the authors will be informed within four weeks. Editorial board reserves the right to make some revisions in the manuscript. Revised manuscripts should also be accompanied by a unique letter with responses to reviewers' comments. Manuscripts that do not comply with the journal requirements listed below may be returned without review at the discretion of the editors. If the journal requests a revision, the author(s) should submit the revised version within three months. Otherwise, it will be considered a new submission.

CHANGES IN AUTHORSHIP

Corresponding author is responsible for accurate declaration of the author list during the initial submission. Changes to the authorship will not be allowed after the acceptance of the manuscript. Exception

is only possible if substantial contribution is provided by an additional co-author during manuscript revision process. In such cases, requests to change the authorship, i.e., to include a co-author must be made by sending an official letter to the editorial office that explains the reason for this change request and signed by all authors to show they agree on the change(s), and the new co-author(s). The final decision is made by the editor.

PREPARATION of MANUSCRIPT

Manuscript should be typed in 12 pt (Times New Roman), double spaced throughout with margins of 2.5 cm, and pages must be numbered on the right bottom of the page. Manuscripts must be in accordance with the International Committee of Medical Journal Editors: Uniform Requirements for Manuscripts Submitted to Biomedical Journals (<http://www.icmje.org/>).

Original articles should not exceed 15 double spaced typewritten pages, and case reports should not exceed 10 pages. Articles should be sent in either "doc" or "txt" format and organized as follows:

a. Title page: Authors must submit the title page as a separate file. The title page should contain the manuscript title, authors' names, academic titles and affiliations, a running title not exceeding 40 characters and the address for manuscript correspondence including e-mail address and telephone and fax numbers. If the article was presented at a scientific meeting, a complete statement including the date and place of the meeting should be provided. An "acknowledgement(s)" section should be placed on the title page to thank those who helped the study or preparation of the manuscript, if any. All funding sources that supported the work and the institutional and/or corporate affiliations of the authors should be acknowledged on the title page. This section contains statements of gratitude for personal, technical or material help, etc. Conflict of interest statement should also be included.

b. Abstract and keywords: All articles should contain an abstract. Authors should include the abstract and the key words in the main text file. Abstracts must be no longer than 250 words. The abstracts should be structured [objective, materials and methods, results and conclusions]. Case reports should also include a structured abstract [objective, case report(s), and conclusion]. Abbreviations and institutional information should not be written in the abstract. The authors should list three to five key words or phrases taken from Index Medicus Medical Subject Headings (<http://www.nlm.nih.gov/mesh/MBrowser.html>) at the end of this section.

c. Maintext: Original articles should be organized in six main headings: abstract, keywords, introduction, material and method, results, and discussion. Abbreviations should be defined at first mention in the text and in each table and figure. If a brand name is cited, supply the manufacturer's name and address (city and state/country). Case reports should include the following identifiable sections: abstract, keywords, introduction, case report(s), and discussion.

Figure legends should be included in the main text file after the references.

d. References: References should be arranged according to the "Uniform Requirements for Manuscripts Submitted to Biomedical Journals" rules developed by "International Committee of Medical Journal Editors (ICMJE)". Some examples have been provided for frequently used reference types. The http://www.nlm.nih.gov/bsd/uniform_requirements.html site should be used for guidance on other types of references not provided here. Each reference should be numbered and listed according to their order in the text. They should be referred to in parentheses as "(...)" at the end of sentences within the text. The author(s) are responsible for the accuracy of the references. Journal titles should be abbreviated according to Index Medicus. Refer to the "List of Journals Indexed in Index Medicus" for abbreviations of journal names, or access the list at <http://www.nlm.nih.gov/tsd/serials/lji.html>. Abbreviations are not used for journals that are not listed in the Index Medicus. Only published articles or articles "in press" can be used in references. All authors names must be written, **do not use "et al"**.

Link for EndNote Style: https://endnote.com/style_download/turkish-journal-of-pathology-turk-patoloji/

Journals:

Halpern SD, Ubel PA, Caplan AL. Solid-organ transplantation in HIV-infected patients. *N Engl J Med.* 2002;347:284-7. PMID: 12140307, DOI: 10.1056/NEJMs020632.

Books:

Breedlove GK, Schorfheide AM. Adolescent pregnancy. 2nd ed. Wiecek RR, editor. White Plains (NY): March of Dimes Education Services; 2001.

Book chapters:

Meltzer PS, Kallioniemi A, Trent JM. Chromosome alterations in human solid tumors. In: Vogelstein B, Kinzler KW, editors. *The genetic basis of human cancer.* New York: McGraw-Hill; 2002. 93-113.

Meeting announcements:

Christensen S, Oppacher F. An analysis of Koza's computational effort statistic for genetic programming. In: Foster JA, Lutton E, Miller J, Ryan C, Tettamanzi AG, editors. *Genetic programming. EuroGP 2002: Proceedings of the 5th European Conference on Genetic Programming;* 2002 Apr 3-5; Kinsdale, Ireland. Berlin: Springer; 2002. p. 182-91.

e. Tables: Each table must be typed double-spaced on a separate page and should be included in the main text file, after the references and figure legends. Tables should be numbered consecutively with Roman numerals in order of appearance in the text and should include a short descriptive title typed directly above and essential footnotes including definitions of abbreviations below. They should be self-explanatory and should supplement rather than duplicate the material in the text.

f. Figures: All figures should be numbered sequentially in the text with Arabic numbers and should be referred to in parentheses within the text. Art should be created / scanned and saved as either TIFF or JPEG format, submitted as a separate file, and not embedded in the text file. Electronic photographs, radiographs, CT scans, and scanned images **must have a resolution of at least 600 dpi and 3861x2048 pixels and must be submitted as either .tiff or .jpeg files.** Writing any text on the figures should be avoided as much as possible.

g. Figure legends: Legends should be included for all figures and appear on a separate page after the references, should be brief and specific, and should include magnification and the stain used. Abbreviations and symbols used in the figures must be denoted in the legend.

SUBMISSION OF ARTICLES

All manuscripts must be submitted on-line through the web site (<http://www.turkpath.org/submit/>).

The corresponding author should complete the "Turkish Journal of Pathology Author Responsibility Form" during the submission of manuscript.

SUBMISSION CHECKLIST

1. Turkish Journal of Pathology Author Responsibility Form (to be filled electronically during submission)
2. Cover letter
3. Proof of ethical approval
4. Title page including conflict of interest, funding, acknowledgements and ethics committee approval statements as well as the authors' contributions (separate file)
5. Abstract
6. Keywords (3-5)
7. Maintext file (including the title, abstract, keywords, references, figure legends, and tables)
8. Figures (separate file)

REPRINTS

Authors will receive a complimentary electronic (PDF) reprint of the article. No hardcopy complimentary reprints are provided by the publisher.

COPYRIGHT

The authors own the copyright for the articles published in Turkish Journal of Pathology. All articles are published as open access under the [Creative Commons Attribution License \(CC BY\)](#). This license means all articles upon publication can be accessed, downloaded, shared, and reused with proper citation.

OPEN ACCESS POLICY

Turkish Journal of Pathology is published as open access under the [Creative Commons Attribution License \(CC BY\)](#). This license means that with the publication all articles can be accessed, shared, downloaded and reused as long as the proper citation is given. Turkish Journal of Pathology adopts the Open Access Declaration published by [Budapest Open Access Initiative](#) in Feb, 2002.

EDITORIAL CORRESPONDENCE

Prof. Dr. Volkan ADSAY (Editor-in-Chief)
Koc University, Department of Pathology
Istanbul, Turkey
E-mail: editor@turkpath.org

PUBLISHER CORRESPONDENCE

Bulus Design and Printing
Bahriye Uçok Caddesi No: 9/1, Beşevler,
06500, Ankara, Turkey
Tel: +90 (312) 223 55 44; +90 (312) 222 44 06
Fax: +90 (312) 222 44 07
E-mail: bulus@bulustasarim.com.tr

CONTENTS

REVIEW

101

Whole Slide Images in Artificial Intelligence Applications in Digital Pathology: Challenges and Pitfalls

Kayhan BASAK, Kutsev Bengisu OZYORUK, Derya DEMIR

ORIGINAL ARTICLES

109

25-Year Storage of Human Choroid Plexus in Methyl Salicylate Preserves Its Antigen Immunoreactivity

Dina A. SUFIEVA, Elena A. FEDOROVA, Vladislav S. YAKOVLEV, Olga V. KIRIK, Daria L. TSYBA, Igor P. GRIGOREV, Dmitrii E. KORZHEVSKII

117

Development of Glioblastoma from Stem Cells to a Full-Fledged Tumor

Pavel Vladimirovich NIKITIN, Guzel Railevna MUSINA, Valery Nikolaevich POLOZOV, Dmitry Nikolaevich GOREIKO, Vladimir Mikhailovich KRASNOVSKY, Leonard WERKENBARK, Mauric KJELIN, Piotr Sergeevich TIMASHEV

133

Histoplasmosis of the Head and Neck Region Mimicking Malignancy: A Clinic-Pathological Predicament

Neha MITTAL, Asawari PATIL, Priyamvada SINGHAL, Munita Meenu BAL, Swapnil Ulhas RANE, Shivakumar THIAGARAJAN

140

Impact of COVID-19 Pandemic on Pathology Residency Program: An Experience from India

Arti KHATRI, Somshankar CHOWDHURY, Dipti SIDAM, Sonali MALIK, Toshali PANDEY, Sumanashree MALLAPPA

147

Analysis of SMARCA4 and SMARCA2 Loss in Lung Sarcomatoid Carcinomas

Halide Nur URER, Nurcan UNVER, Neslihan FENER

CASE REPORT

154

A Rare Case of A Low-Grade Inflammatory Leiomyosarcoma/Histiocyte-Rich Rhabdomyoblastic Tumor in the Neck of An Adolescent Male

Bharat REKHI, Munita BAL, Bhaskar DHARAVATH, Amit DUTT, Prathamesh PAI

161

Neuroendocrine Tumor of the Fallopian Tube and Serous Adenocarcinoma of the Ovary: Multicentric Primary Tumors

Nataliia HYRIAVENKO, Mykola LYNDIN, Vladyslav SIKORA, Ruslana CHYZHMA, Yulia LYNDINA, Kateryna SIKORA, Wireko Andrew AWUAH, Anatolii ROMANIUK

ERRATUM

167

Correction: Development of Glioblastoma from Stem Cells to a Full-Fledged Tumor

